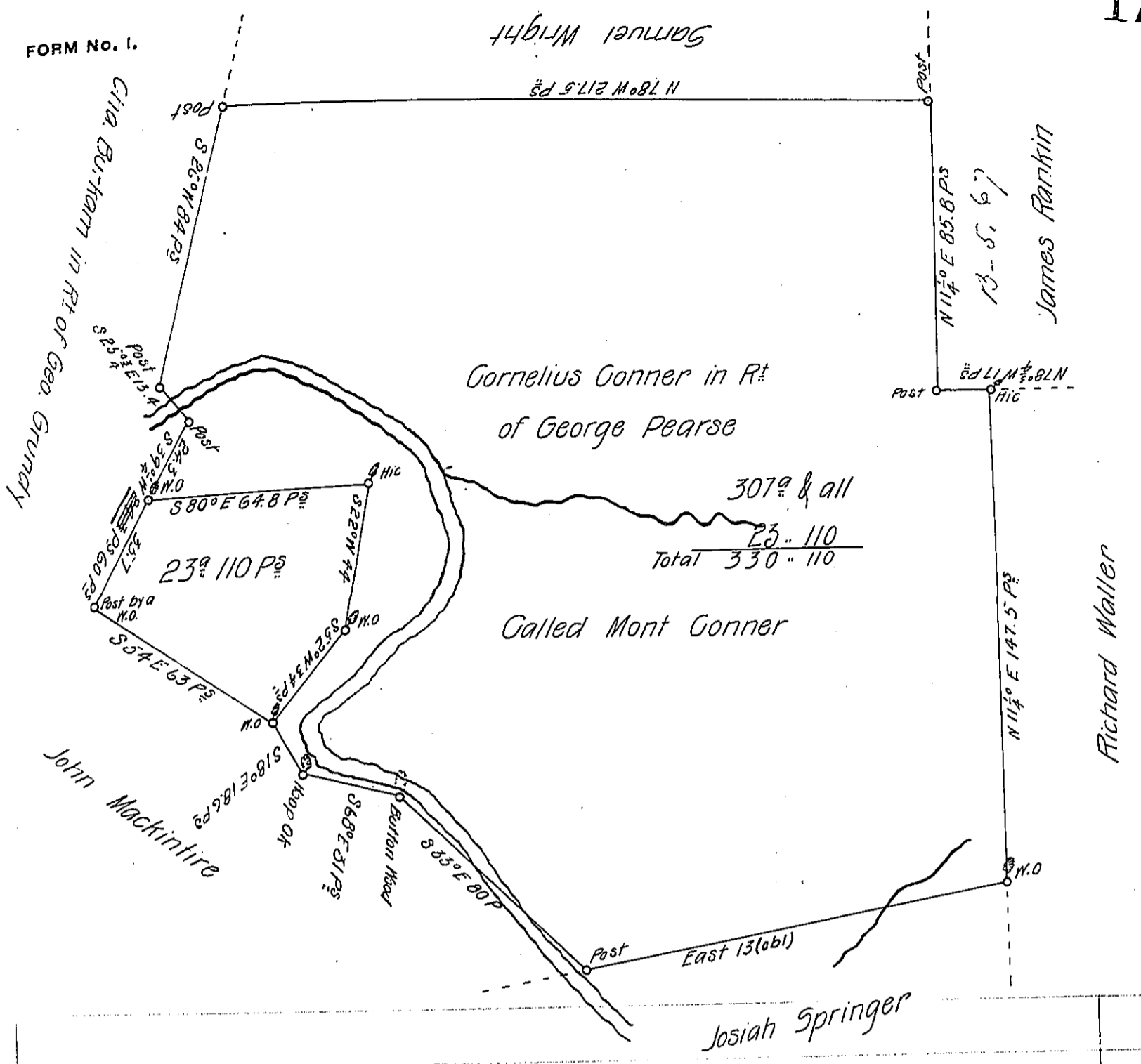


FORM NO. 1.



Situated on Great Red Stone Creek in the New Purchase. Bedford County & Survey'd the 10th day of July 1770. By order of Survey in the name of George Pearse No 1057 dated the 3^d day of April 1769.

Note the above piece being Surv'd P Alex^e McGlean for the Owner of the large tract it is added at his particular Request that he may obtain Patent for it on this Location.

By *McLane Dp Sy^e*

To John Lukens Esq
Surveyor General.

Now Fayette County.

IN TESTIMONY that the above is a copy of the original remaining on file in the Department of Internal Affairs of Pennsylvania, made conformably to an Act of Assembly approved the 16th day of February, 1833, I have hereunto set my Hand and caused the Seal of said Department to be affixed at Harrisburg, this twenty second day of May 1906

George B. Brown
Secretary of Internal Affairs.